

Genius iQ.

6 steps to optimum measurement results.

Easy and fast: with the electronic color measuring device Genius iQ the search for the right color is child's play. We'll show you how to use Genius for the best results.



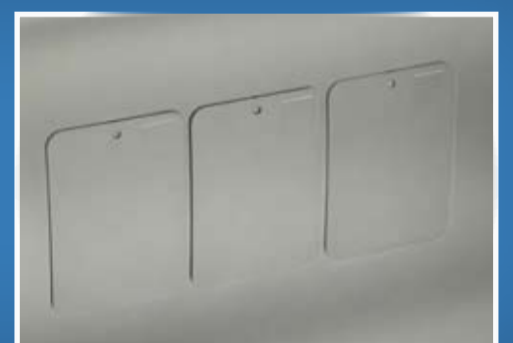
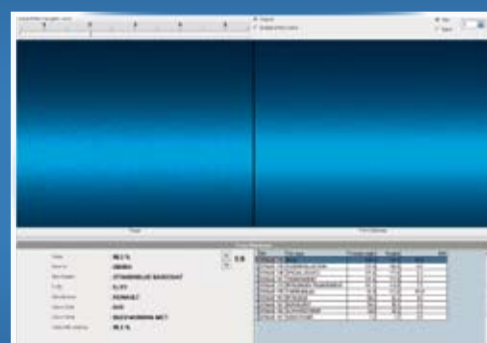
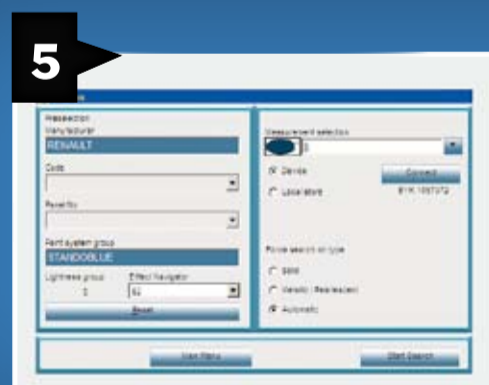
In order to deliver flawless results, the Genius device with the help of its associated blue and white standards should be calibrated regularly. The standard must be kept clean at all times. Tip: for cleaning use warm water and a soft cloth. Do not use solvents or polish.

The surface must be perfectly prepared so that colors can be accurately measured, scratched areas should be sanded and then machine polished.

And: avoid measurements on surfaces and objects that have been exposed to prolonged direct sunlight, the ideal measuring temperature is 20°C (+/- 5°C).

Each color measurement requires three measurements each with different orientations of the device at the same measuring point. For an accurate result the area to be measured must be smooth and as close as possible to the damaged area. Edges or bulges can produce unwanted light rays and lead to incorrect test results, scratches on the surface can result in an incorrect effect identification reading. Faulty measurements are displayed on the device screen.

Everything in view: during the measurement, the appropriate car brand can be assigned in the touch screen display - any information entered will be adopted when connected to Standwin.



The Standwin software shows all hits as a list - based on the values and color icons, (for color and effect accuracy) the optimum formula is selected quickly and easily.

In the comparison result display the formulas found can be compared visually with the measurement result: the digital display shows the differences in color and in effect.

Before starting the refinishing, a sample panel must be sprayed with the formula and this then compared with the color on the car.

Tip: the sample panels with successful measurements should be labelled and archived, you then have access to them as and when required.



The Art of Refinishing.